

COMMUNICATIVE SPIRAL
PROPOSAL
OF ENTRANCE CANOPY & MEETING ROOM SKYLIGHT
FOR ICLAB INTERCULTURAL CREATIVITY
LABORATORY

VIALE ALESSANDRO GUIDONI 103, 50127 FLORENCE

Rabson Joseph Bota & Iuliia Bota
Spechtweg 10, 21614 Buxtehude Germany
mobil: +49 (0)177 517 9016
email: tiuliia@yahoo.com

A STORY OF UNITY AND DIVERSITY

Since the field of Cultural studies was opened by, arguably, the 18th Century German Philosopher Johann Gottfried Herder, the idea that despite defining our diversity, cultures unify us as human beings has been exhaustively echoed by various scholars.

Human DNA, like our cultures, tells of our inherent phenotypic differences as human beings. Exhaustive scientific studies in this novel field, however, are continually unraveling how, despite the apparent differences, the human DNA really links us together as human beings in ancestry.



Concept development

Basing on the said idea and the multicultural nature of the ICLAB, its activities and its goals, a design is hereby proposed that narrates a story of the celebration of human diversity and embracing unity.

ARCHITECTURAL CONTEXT

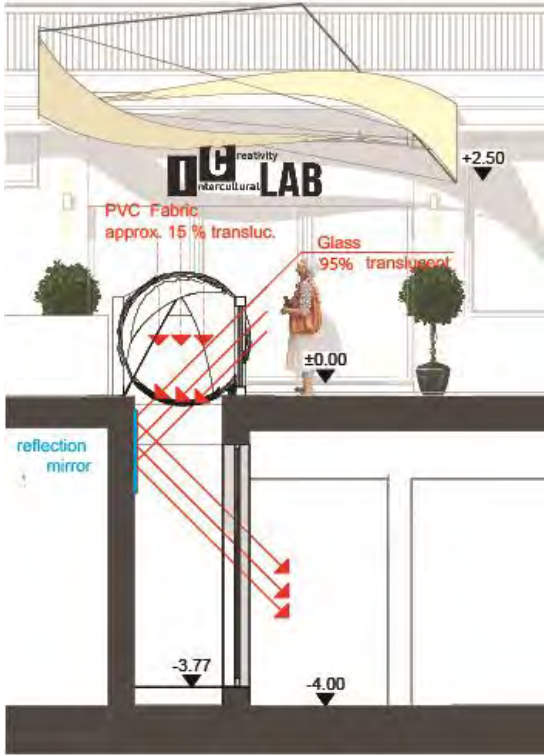
The city of Florence and the history of Italian renaissance are inseparable. An attempt is made to stay true to this spirit, not by mimicry rather by attempting a more novel approach in surrounding of massive international style buildings. To fit in context, and as such respect the existing structures, a huge emphasis is placed on the use of lightweight tensile fabric.



Perspective view 1

THE STRUCTURE

The main support structure of the corridor cover proposed is of steel. It is formed, albeit abstractly, as a depiction of microscopic structure of the human DNA. 2 pairs of steel sections run spirally along the length of the corridor. Between each pair of sections run glass panels which provide a possibility to not only allow light in to the corridor but to also provide some interesting natural lighting effects.



Cross-sectional view

To further enhance the entry of light into the corridor, the sides are naturally lit through the use of glass panels which can be opened for ventilation as well as smoke ejection in case of fire. To lighten the structure in visual weight, pre-stressed PVC coated membrane fabric with a translucency of approximately 15% or higher Spans between pairs of steel section spirals.

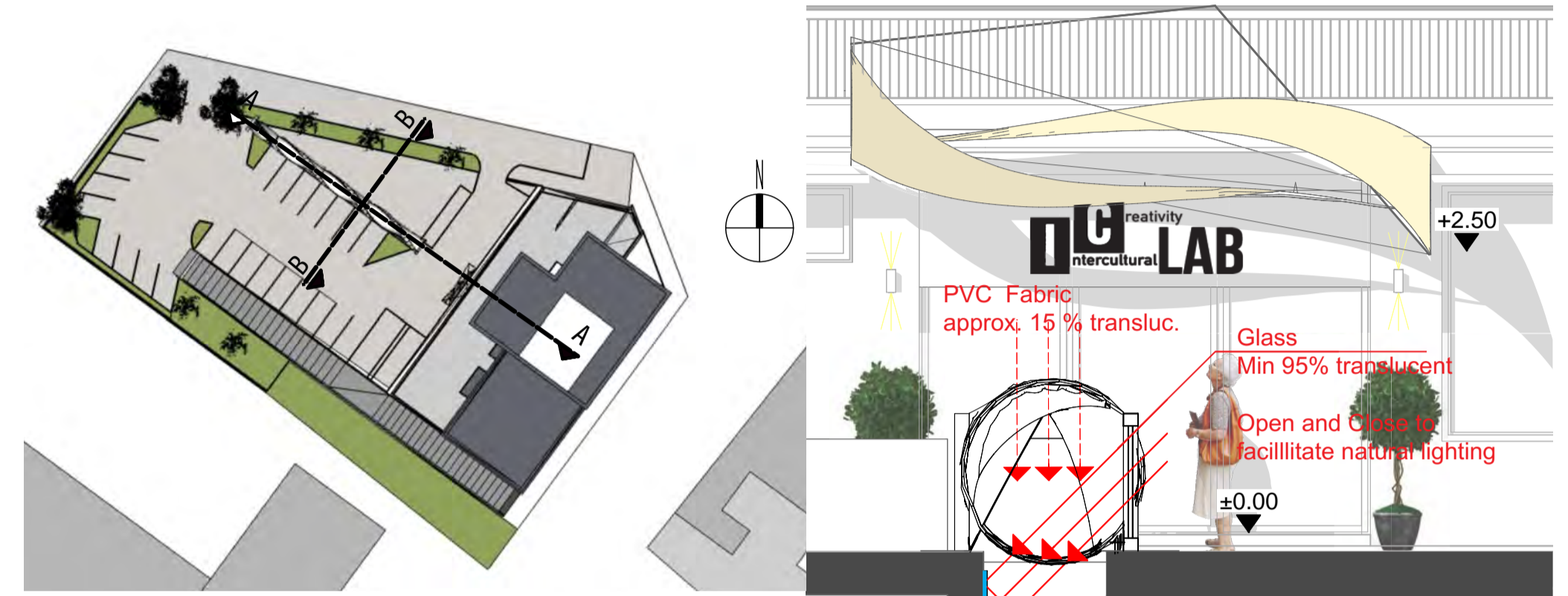
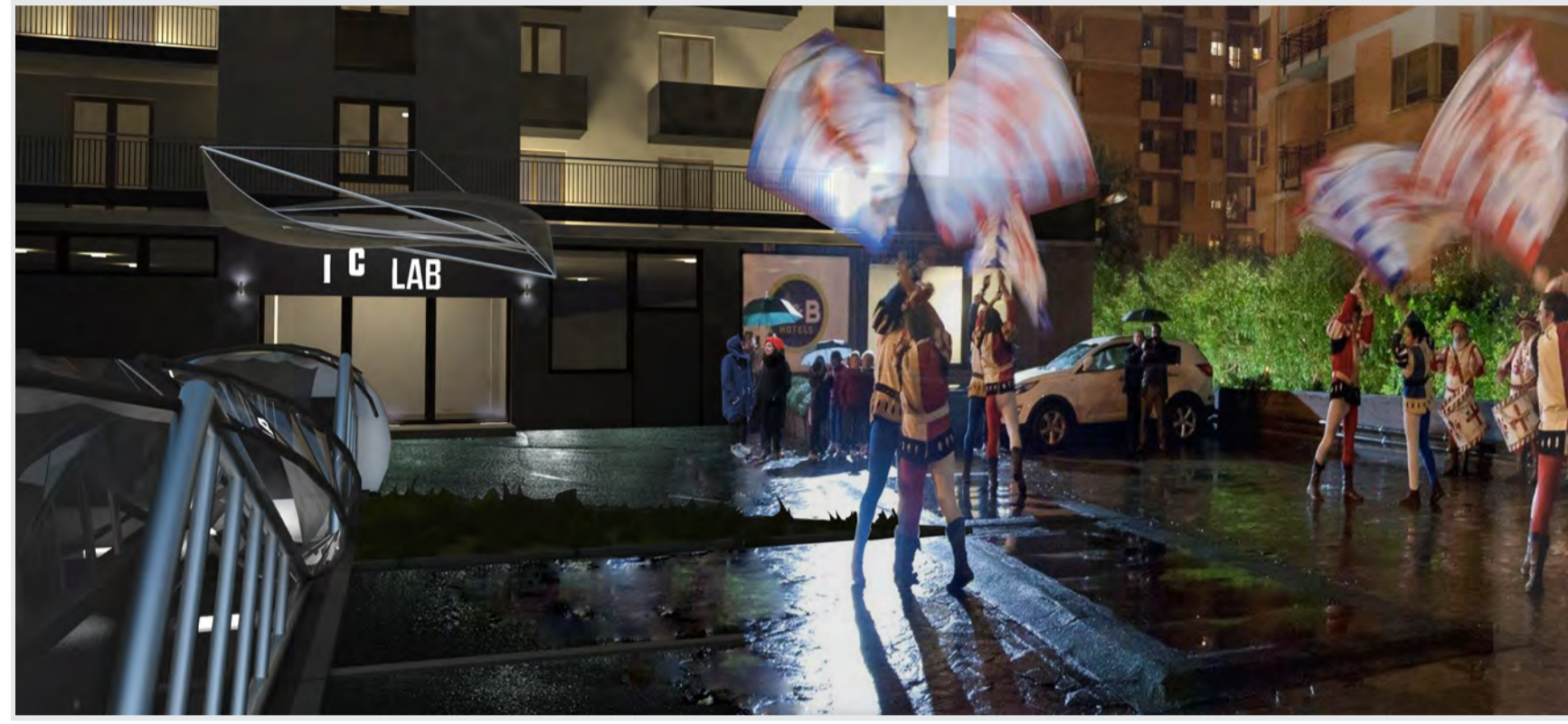
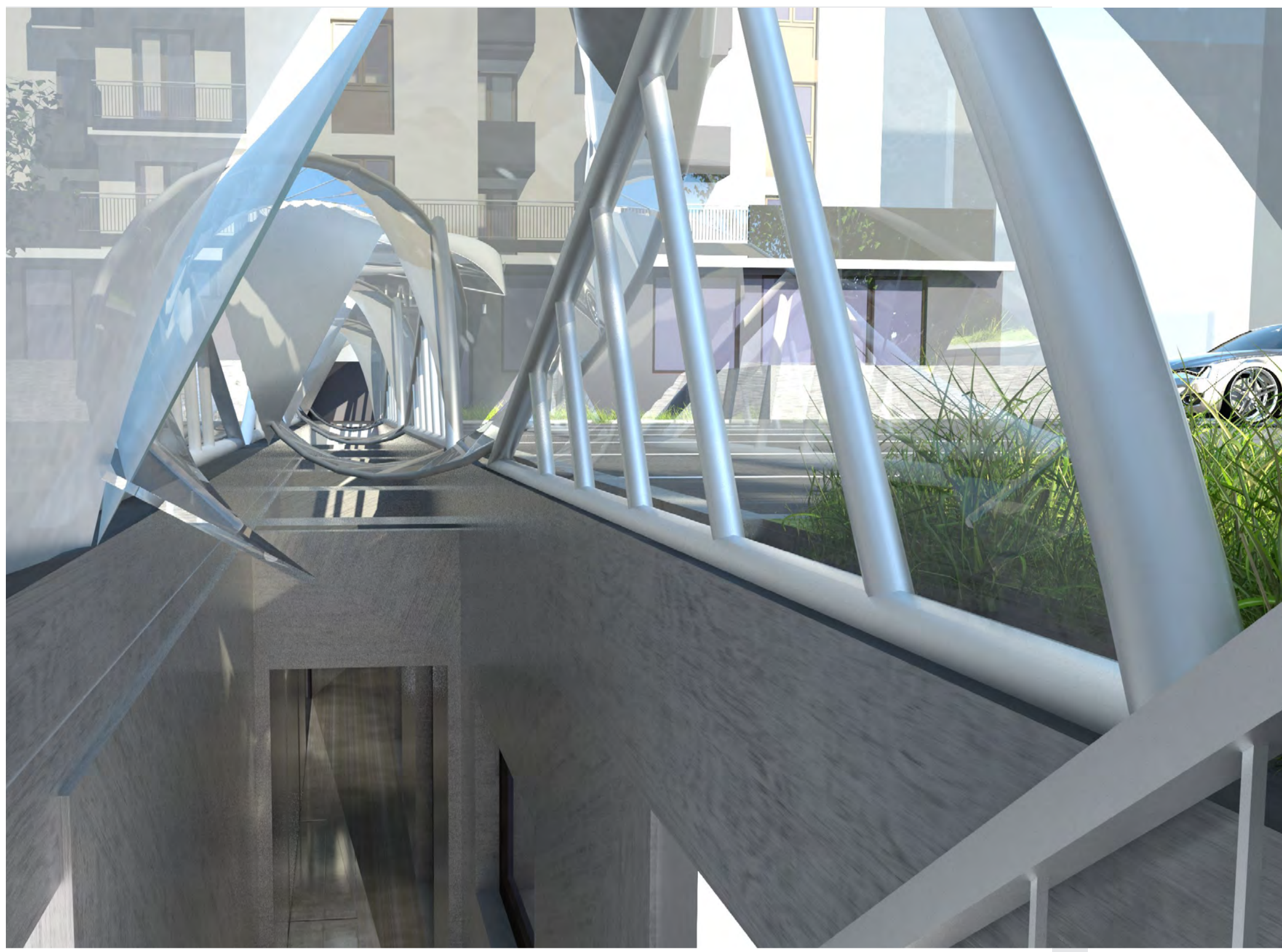


Longitudinal section

The entrance canopy is similar in concept. However, instead of membrane fabric, the cover material is of bendable acrylic glass encased in light steel frame. The support steel work runs from the end tips, forming a twisted triangular form. It is then supported by way of two cables mounted about the height of the handrails of the balcony above.



Perspective view 2



COMMUNICATIVE SPIRAL ICLAB

concept development

corridor volume

Spiral shape

cultural dialogue

cover material

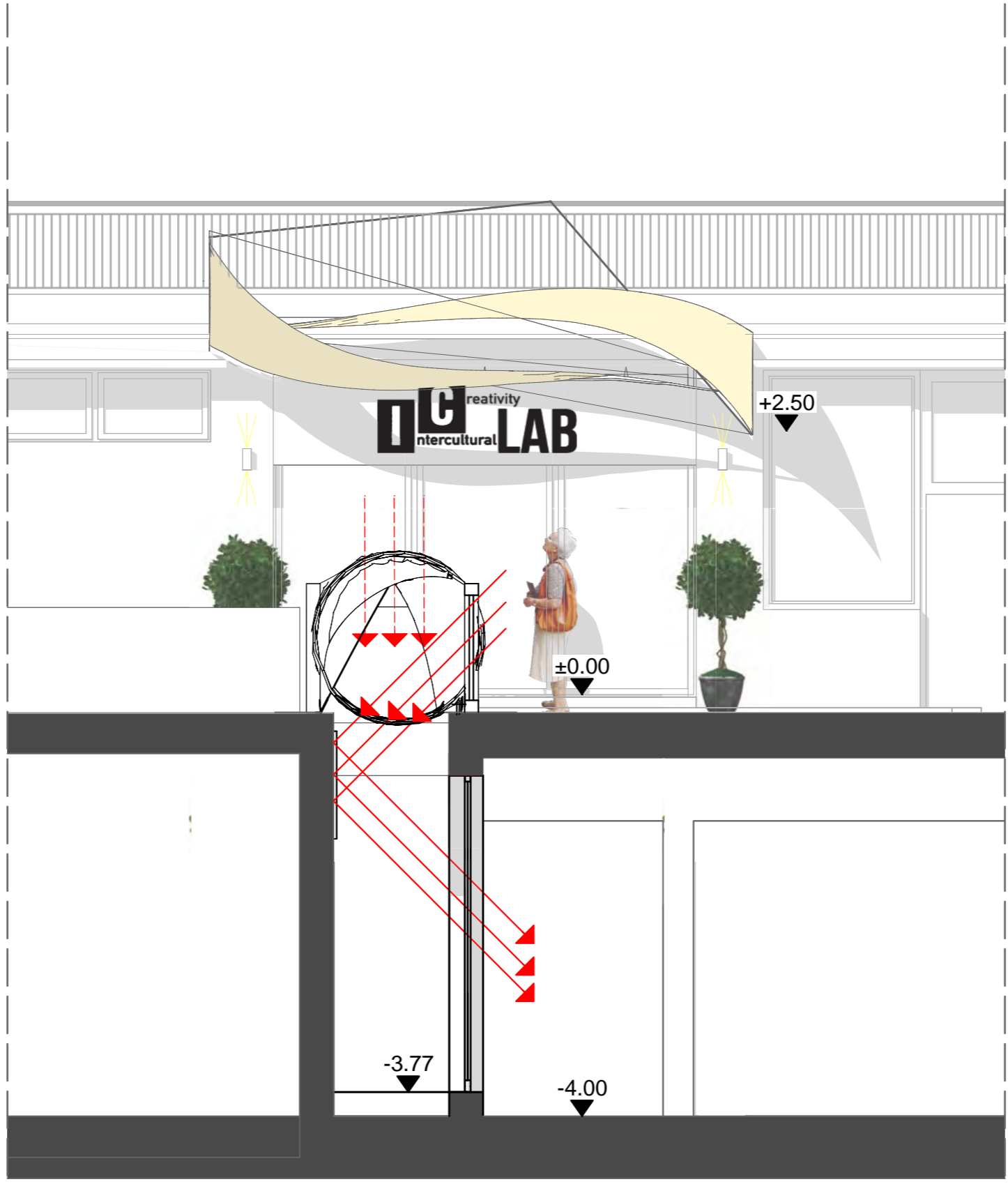
human DNA, like our cultures, tells of our inherent differences and yet relates us as human beings.

multicultural nature of the ICLAB, its activities and its goals, a structure is hereby proposed that narrates a story of the celebration of human diversity and embracing unity

Translucent PVC Polyester Light weight to respect and blend in the architectural context. Translucent so as to facilitate capturing of light.

0 1m SECTION B - B
M 1:50





0 1m SECTION B - B
M 1:50



